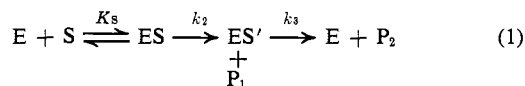


Use of the Specificity Constant of  $\alpha$ -Chymotrypsin<sup>1</sup>Frederick E. Brot<sup>2</sup> and Myron L. Bender

Contribution from the Division of Biochemistry, Department of Chemistry, Northwestern University, Evanston, Illinois 60201. Received April 23, 1969

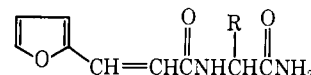
**Abstract:** The turnover constant,  $k_{\text{cat}}$ , the Michaelis–Menten constant,  $K_m$ , and the specificity constant,  $k_{\text{cat}}/K_m$ , were calculated for the  $\alpha$ -chymotrypsin-catalyzed hydrolysis of the N-3-(2-furyl)acryloylamides of L-tryptophan, L-phenylalanine, L- $\alpha$ -aminoheptanoic acid, and L-leucine. No correlation was observed between the structure (hydrocarbon side-chain character) of these amino acid derivatives and either  $k_{\text{cat}}$  or  $K_m$ , but an excellent correlation was found between the structure and the specificity constant,  $k_{\text{cat}}/K_m$ . The relative specificities ( $k_{\text{cat}_i}/K_{m_i}$ )/( $k_{\text{cat}_j}/K_{m_j}$ ) between any of the above amides was the same (within experimental error) as those calculated previously between the analogous N-acetyl amino acid methyl esters. Therefore, the proposal that the specificity constant is the most accurate reflection (of all kinetic constants) of the  $\alpha$ -chymotrypsin specificity for a substrate is confirmed. From this proposal (1) an interpretation is established for the binding specificity of a substrate to the enzyme, and (2) the specificity constant and relative specificity can be used to predict the behavior of  $\alpha$ -chymotrypsin toward any given substrate which is a derivative of an  $\alpha$ -L-amino acid.

The enzyme  $\alpha$ -chymotrypsin selectively catalyzes the hydrolysis of ester and peptide bonds (the C–X bond in Figure 4) in which the reactive carbonyl group belongs to the L-amino acids tryptophan, tyrosine, phenylalanine, and, to a lesser extent, leucine. The kinetic pathway of this enzyme has been elucidated for the non-specific substrates *p*-nitrophenyl acetate,<sup>3</sup> esters of *trans*-cinnamic acid,<sup>4</sup> and recently more dramatically for the specific substrate N-3-(2-furyl)acryloyl-L-tryptophan methyl ester.<sup>5</sup> The  $\alpha$ -chymotrypsin-catalyzed hydrolysis of an ester (or other) substrate is a three-step process (eq 1) in which are formed (1) ES, an enzyme-substrate complex, (2) ES', the acyl enzyme, and P<sub>1</sub> the alcohol, and (3) E, the enzyme, and P<sub>2</sub>, the carboxylic acid. The steps following the reversible complex formation have been characterized.<sup>6,7</sup> Since the en-



zyme-catalyzed process is now known at the level of the individual steps, it is possible to probe meaningfully the striking property of enzyme specificity.<sup>7–9</sup> In other words, one may now begin to understand why some substrates, particularly those amino acid derivative with the larger hydrocarbon side chain,<sup>9</sup> are enzymatically hydrolyzed much faster than others, and why amino acid derivatives of the L configuration are generally hydrolyzed much faster than those of the D configuration.<sup>10</sup> Each of the three steps in the mechanism of eq 1 has its own specificity. Most of the data in the literature has been determined in terms of  $k_{\text{cat}}$  ( $k_2 k_3 / (k_2 + k_3)$ ), the turnover constant, and  $K_m$  ( $K_s k_3 / (k_2 + k_3)$ ),

the apparent binding constant, which are not necessarily related to the individual rate constants in a simple manner. It has been proposed<sup>7</sup> that of all kinetic parameters  $k_{\text{cat}}/K_m$  most accurately reflects the specificity of substrates to  $\alpha$ -chymotrypsin. In order to test this hypothesis it seemed desirable to obtain data and calculate the specificity constants not for a series of compounds in which  $k_{\text{cat}}$  and  $K_m$  may be complex functions (see above) as in ester substrates,<sup>8b</sup> but for a series in which  $k_{\text{cat}}$  and  $K_m$  measure simple constants ( $k_2$  and  $K_s$ , respectively). Amides meet this criterion.<sup>11</sup>



Therefore, the N-3-(2-furyl)acryloylamides of L-tryptophan, L-phenylalanine, L- $\alpha$ -aminoheptanoic acid, and L-leucine were selected for examination because these particular amides possess a chromophore<sup>12</sup> ideal for monitoring the hydrolytic reaction of the primary amide bond. The data from these experiments are analyzed in terms of the specificity constant,  $k_{\text{cat}}/K_m$ .

## Experimental Section

**Materials.** 3-(2-Furyl)acryloyl Chloride. 3-(2-Furyl)acrylic acid (10.3 g, 0.0725 mole), Aldrich Chemical Co., mp 139.5–141.5° (lit.<sup>13</sup> mp 140–142°), and 15 ml (0.21 mole) of thionyl chloride, Distillation Products, Inc., were mixed and allowed to stand at 25° for 1.5 hr in a flask protected by a calcium chloride tube, as described earlier.<sup>14</sup> Distillation of the resultant brown mixture at 134° (3.5 mm) afforded 10.2 g (88%) of a light yellow oil which crystallized upon cooling, mp 32–34°. This material was used immediately since partial decomposition (discoloration) occurred rapidly. However, redistillation of the discolored mixture yielded colorless chloride.

N<sup>α</sup>-3-(2-Furyl)acryloyl-L-tryptophanamide (Cyclo Chemical Co., Lot K 5502-2) was crystallized from ethyl acetate–hexane, mp 176–178°, [ $\alpha$ ]<sub>D</sub><sup>25</sup> –60.5 ± 6.0° (c 3, ethanol), uv max (3.2% acetonitrile–pH 8 Tris) 305 m $\mu$  ( $\epsilon$  27,600). *Anal.* Calcd for C<sub>18</sub>H<sub>17</sub>N<sub>3</sub>O<sub>4</sub>: C, 66.86; H, 5.30; N, 13.00. Found: C, 66.81; H, 5.31; N, 13.01.

(11) M. L. Bender, G. E. Clement, C. R. Gunter, and F. J. Kézdy, *J. Am. Chem. Soc.*, **86**, 3697 (1964).

(12) S. A. Bernhard, S. J. Lau, and H. Noller, *Biochemistry*, **4**, 1108 (1965).

(13) A. Baeyer, *Chem. Ber.*, **10**, 355 (1877); M. Jaffe and R. Cohn, *ibid.*, **20**, 2311 (1887).

(14) T. Sasaki, *Biochem. Z.*, **25**, 275 (1910).

(1) This research was supported by grants from the National Institutes of Health.

(2) National Institutes of Health Postdoctoral Fellow, 1966–1968.

(3) B. S. Hartley and B. A. Kilby, *Biochem. J.*, **50**, 672 (1952); **56**, 288 (1954).

(4) M. L. Bender and B. Zerner, *J. Am. Chem. Soc.*, **84**, 2550 (1962).

(5) C. G. Miller and M. L. Bender, *ibid.*, **90**, 6850 (1968).

(6) For a discussion see M. L. Bender, *J. Am. Chem. Soc.*, **84**, 2582 (1962); M. L. Bender and F. J. Kézdy, *ibid.*, **86**, 3704 (1964).

(7) M. L. Bender and F. J. Kézdy, *Ann. Rev. Biochem.*, **34**, 49 (1965), and references therein.

(8) (a) J. R. Rapp, C. Niemann, G. E. Hein, *Biochemistry*, **5**, 4100 (1966), and references therein; (b) J. R. Knowles, *J. Theoret. Biol.*, **9**, 213 (1965).

(9) G. L. Neil, C. Niemann, and G. E. Hein, *Nature*, **210**, 903 (1966).

(10) D. W. Ingles and J. R. Knowles, *Biochem. J.*, **104**, 369 (1967).

**Table I.** The  $k_{\text{cat}}$  and  $K_m$  Values for the  $\alpha$ -Chymotrypsin-Catalyzed Hydrolysis of N-3-(2-Furyl)acryloyl-L-amino Acid Amides at pH 8.05  $\pm$  0.05, 25°, 0.1 M Tris

Amino acid	$k_{\text{cat}} \times 10^2 \text{ sec}^{-1}$	$K_m \times 10^3 M$	$k_{\text{cat}}/K_m, M^{-1} \text{ sec}^{-1}$	$\frac{k_{\text{cat}}/K_m}{k_{\text{cat}_{\text{Ph}}}/K_{m_{\text{Ph}}}}$
Tryptophan	6.9 $\pm$ 0.4	1.4 $\pm$ 0.4	49 $\pm$ 4	5.2
Phenylalanine	4.22 $\pm$ 1.2	4.5 $\pm$ 1.5	9.4 $\pm$ 2.0	1
$\alpha$ -Aminoheptanoic acid	0.105 $\pm$ 0.015	0.90 $\pm$ 0.20	1.18 $\pm$ 0.08	0.12
Leucine			0.19 $\pm$ 0.02	0.02

The hydrolysis product was identified as N-3-(2-furyl)acryloyl-L-tryptophan by comparison of the uv spectrum, uv max (3.2% acetonitrile-pH 8 Tris) 302 m $\mu$  ( $\epsilon$  28,100), with the uv spectrum of the authentic acid,<sup>15</sup> uv max (3.2% acetonitrile-pH 8 Tris) 302 m $\mu$  ( $\epsilon$  25,320). This is distinguishable from 3-(2-furyl)acrylic acid, uv max (3.2% acetonitrile-pH 8 Tris) 292 m $\mu$  ( $\epsilon$  25,000).

The N-3-(2-furyl)acryloylamino acid amides described below were prepared according to the following method. Two mmoles of L-amino acid amide hydrochloride (recrystallized from acetone-water) and 5.0 mmoles of triethylamine (Matheson Coleman and Bell Co., bp 88.5–89.0°) were mixed in 10 ml of benzene. A solution of 2.1 mmoles of 3-(2-furyl)acryloyl chloride in 10 ml of benzene was added to this mixture which was gently swirled. After 1 hr 25 ml of water and 25 ml of ethyl acetate were added and the organic phase was washed with 15 ml of 3 N hydrochloric acid, dried (magnesium sulfate), and treated with charcoal. Evaporation at reduced pressure and addition of hexane to the residue induced crystallization. After two recrystallizations (ethyl acetate-hexane) the desired N-3-(2-furyl)acryloylamino acid amide was obtained in 20–40% yield.

**N-3-(2-Furyl)acryloyl- $\alpha$ -phenylalaninamide** was prepared from L-phenylalaninamide hydrochloride [Cyclo Chemical Co., Lot K5150,  $[\alpha]^{25D} +19.9^\circ$  (c 2, water), lit.<sup>16</sup>  $[\alpha]^{25D} +20.7^\circ$  (c 1, water)] and had mp 224–227°,  $[\alpha]^{25D} -73.5 \pm 7.3^\circ$  (c 1, acetonitrile), uv max (3.2% acetonitrile-pH 8 Tris) 305 m $\mu$  ( $\epsilon$  25,800). *Anal.* Calcd for C<sub>18</sub>H<sub>16</sub>N<sub>2</sub>O<sub>3</sub>: C, 67.59; H, 5.67; N, 9.85. Found: C, 67.51; H, 5.85; N, 9.67.

The hydrolysis product was identified as N-3-(2-furyl)acryloyl-L-phenylalanine by comparison of the uv spectrum, uv max (3.2% acetonitrile-pH 8 Tris) 302.5 m $\mu$  ( $\epsilon$  27,000), with the uv spectrum of the authentic acid,<sup>15</sup> uv max (3.2% acetonitrile-pH 8 Tris) 302.5 m $\mu$  ( $\epsilon$  26,600).

**N-3-(2-Furyl)acryloyl-L- $\alpha$ -aminoheptanamide** was prepared from L- $\alpha$ -aminoheptanamide hydrochloride [Cyclo Chemical Co. Lot K5460,  $[\alpha]^{25D} +9.4 \pm 0.6^\circ$  (c 3, water). *Anal.* Calcd for C<sub>17</sub>H<sub>17</sub>N<sub>2</sub>OCl: C, 46.53; H, 9.48; N, 15.50. Found: C, 46.74; H, 9.42; N, 15.26] and had mp 179–181°,  $[\alpha]^{25D} +24.2 \pm 6.7^\circ$  (c 1, acetonitrile), uv max (3.2% acetonitrile-pH 8 Tris) 304 m $\mu$  ( $\epsilon$  26,000). *Anal.* Calcd for C<sub>14</sub>H<sub>20</sub>N<sub>2</sub>O<sub>3</sub>: C, 63.62; H, 7.62; N, 10.54. Found: C, 63.75; H, 7.64; N, 10.39.

The hydrolysis product was assumed to be N-3-(2-furyl)acryloyl-L- $\alpha$ -aminoheptanoic acid on the basis of the uv spectrum, uv max (3.2% acetonitrile-pH 8 Tris) 302.5 m $\mu$  ( $\epsilon$  26,100).

**N-3-(2-Furyl)acryloyl-L-leucinamide** was prepared from L-leucinamide hydrochloride [Cyclo Chemical Co., Lot K4934,  $[\alpha]^{25D} +10.8^\circ$  (c 2, water), lit.<sup>16</sup>  $[\alpha]^{25D} 10.0^\circ$  (c 1, water)] and had mp 176–178°,  $[\alpha]^{25D} +18.3 \pm 3.6^\circ$  (c 1.5, acetonitrile), uv max (3.2% acetonitrile-pH 8 Tris) 305 m $\mu$  ( $\epsilon$  27,200). *Anal.* Calcd C<sub>13</sub>H<sub>18</sub>N<sub>2</sub>O<sub>3</sub>: C, 62.38; H, 7.25; N, 11.19. Found: C, 62.36; H, 7.30; N, 10.85.

The hydrolysis product was identified as N-3-(2-furyl)acryloyl-L-leucine by comparison of the uv spectrum, uv max (3.2% acetonitrile-pH 8 Tris) 302.5 m $\mu$  ( $\epsilon$  28,400), with the uv spectrum of the authentic acid (obtained by alkaline hydrolysis of the amide), mp 160–162°, uv max (pH 8 Tris) 302.5 m $\mu$  ( $\epsilon$  27,800), mass spectrum *m/e* 251 (3.2%). *Anal.* Calcd for C<sub>13</sub>H<sub>17</sub>NO<sub>3</sub>: C, 62.14; H, 6.82; N, 5.57. Found: C, 61.60; H, 6.83; N, 6.01.

**$\alpha$ -Chymotrypsin.** Worthington  $\alpha$ -chymotrypsin (three times crystallized, salt free), Lots CDI-6KB and CDI-7CD, was used without further purification. Enzyme solutions were routinely passed through 0.22- $\mu$  Millipore filters to guarantee 100% optically clear solution. The operational normality of the enzyme solution was determined<sup>17</sup> by titration with *N-trans*-cinnamoylimidazole

according to method A.<sup>17</sup> Stock substrate solutions were made from Eastman Spectra Grade acetonitrile which had been distilled from phosphorus pentoxide. All water used was glass distilled in a Corning AG-2 still after passing through an Amberlite MB 3 resin and a cationic exchanger. Tris(hydroxymethyl)aminomethane buffer (0.1 M) was prepared from Trizma Base (Sigma Chemical Co.). Acetate buffer was prepared<sup>18</sup> from Mallinckrodt reagent grade sodium acetate trihydrate. All pH values were measured on a Radiometer 4C pH meter. At the end of each kinetic run the pH of the solution was measured.

**Kinetic Measurements.** Kinetics of hydrolysis were determined using a Cary 14 PM recording spectrophotometer (0–0.1 and 0–1.0 absorbance slide wires) equipped with a thermostated cell compartment. The hydrolyses of the N-furylacryloyl-L-amino acid amides were conducted at 25° and pH 8.05  $\pm$  0.05, the pH maximum of  $k_{\text{cat}}/K_m$ ,<sup>19</sup> and were observed against a buffer blank as follows (amino acid, wavelength in m $\mu$ ,  $\Delta\epsilon$  observed): tryptophan, 340, 740  $\pm$  20; phenylalanine, 344, 490  $\pm$  20;  $\alpha$ -aminoheptanoic acid, 340, 720  $\pm$  20; leucine 340, 765  $\pm$  30. In all cases  $\epsilon/\Delta\epsilon = 5.0 \pm 0.5$ .

A typical experiment on the Cary spectrophotometer is described for the hydrolysis of N-3-(2-furyl)acryloyl-L-phenylalaninamide as follows. Three milliliters of 0.1 M Tris buffer was equilibrated at 25.0  $\pm$  0.1° in the cuvet in the sample compartment of the spectrophotometer. An acetonitrile stock solution of the amide (75  $\mu$ l, 5.1  $\times 10^{-2}$  M) and 25  $\mu$ l of acetonitrile were added and recording commenced. After approximately 1 min, 50  $\mu$ l of enzyme stock solution (1.14  $\times 10^{-3}$  M) was added and recording commenced after 20 sec. The absorbance data were converted into initial rate data by using the difference in molar absorptivities of the ester and acid. The change in molar absorptivity was determined by making one reaction go to completion.

## Results

The kinetics of the hydrolysis reaction were analyzed<sup>20</sup> in terms of eq 1, which, under turnover conditions, is identical with the Michaelis-Menten<sup>21</sup> equation where P<sub>1</sub> represents ammonia, and P<sub>2</sub>, the N-3-(2-furyl)acryloylamino acid. The general equation for velocity is

$$v = \frac{k_{\text{cat}}[E][S]}{K_m + [S]} \quad (2)$$

where

$$k_{\text{cat}} = \frac{k_2 k_3}{k_2 + k_3} \quad (3)$$

and

$$K_m = K_s \frac{k_3}{k_2 + k_3} \quad (4)$$

For amides, acylation is the rate-limiting step,<sup>11</sup> *i.e.*,  $k_3 \gg k_2$ , so that eq 3 and 4 reduce to  $k_{\text{cat}} = k_2$  and  $K_m = K_s$ , respectively, even if nonproductive binding does occur (see Discussion).

(17) G. R. Schonbaum, B. Zerner, and M. L. Bender, *ibid.*, 236, 2930 (1961).

(18) I. M. Kolthoff and C. Rosenblum, "Acid-Base Indicators," The Macmillan Co., New York, N. Y., 1937, p 256.

(19) M. L. Bender, G. E. Clement, F. J. Kézdy, and H. d'A. Heck, *J. Am. Chem. Soc.*, 86, 3680 (1964).

(20) B. Zerner and M. L. Bender, *ibid.*, 86, 3664 (1964).

(21)  $E + S \xrightleftharpoons{K_m} ES \xrightarrow{k_{\text{cat}}} E + \text{products}$ ; L. Michaelis and M. L. Menten, *Biochem. Z.*, 49, 333 (1913).

(15) C. G. Miller, Doctoral dissertation, Northwestern University, Evanston, Ill., 1968.

(16) E. L. Smith and N. B. Slonim, *J. Biol. Chem.*, 176, 835 (1948).

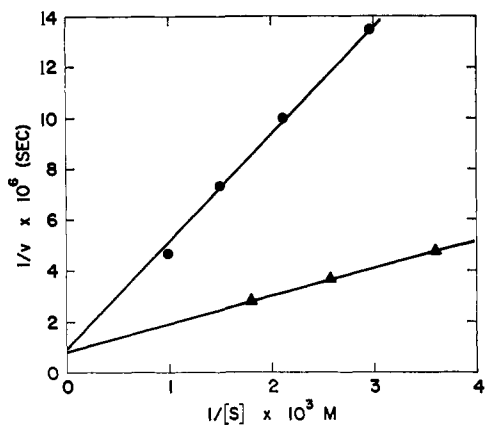


Figure 1. The reaction of  $\alpha$ -chymotrypsin with (1) N-3-(2-furyl)acryloyl-L-tryptophanamide ( $\blacktriangle$ ),  $[E] = 1.81 \times 10^{-6} M$ ,  $[S] = 2.77\text{--}5.55 \times 10^{-4} M$ ; (2) N-3-(2-furyl)acryloyl-L-phenylalaninamide ( $\bullet$ ),  $[E] = 1.98 \times 10^{-6} M$ ,  $[S] = 4.0\text{--}12.1 \times 10^{-4} M$ ; pH  $8.05 \pm 0.05$ ,  $25^\circ$ , 3.2% v/v acetonitrile-water.

The experiments with the amides of tryptophan and phenylalanine were conducted with  $[S] \gg [E]$ . The data, shown in Figure 1, for a single Lineweaver-Burk plot was obtained from the linear steady-state rates of several reactions using different initial substrate conditions. These rates were measured for a fraction of the total extent of reaction, thus  $v = \Delta\text{abs}/(\Delta\epsilon \times \Delta t)$  where  $\Delta\text{abs}$  is the change in optical density observed,  $\Delta\epsilon$  is the calculated change in molar absorptivity and  $\Delta t$  is the time of observation of the absorbance change. The total change in molar absorptivity was determined by hydrolyzing each amide completely. The long extrapolation of the lines in Figure 1 introduce considerable uncertainty in the kinetic parameters (see Table I). The enzymic hydrolysis of N-3-(2-furyl)acryloyl-L- $\alpha$ -aminoheptanamide was sufficiently slow so that the experiments were conducted under the condition  $[E] \gg [S]$ ,  $K_m \gg [S]$ . The data were calculated from the first-order rate constants,  $k_{\text{exp}}$ , of several reactions using different initial enzyme concentrations. These reactions were measured for a large fraction of the reaction. The value for the infinite absorbance was calculated from a Kézdy plot<sup>22</sup> of the absorbances observed. In all reactions, good first-order plots were obtained. The analysis of data obtained under similar conditions has been described earlier.<sup>23</sup> By plotting  $1/k_{\text{exp}}$  vs.  $1/[E]$ , shown in Figure 2,  $k_2$  and  $K_s/k_2$  were calculated from the intercept and slope, respectively.

The enzymic hydrolysis of N-3-(2-furyl)acryloyl-L-leucinamide was observed at  $[E] \gg [S]$  and  $K_m \gg [S]$  (and pH 8) for several hours. Under these conditions it was necessary to determine the amount of enzyme undergoing denaturation. At pH 8  $k_d$ , the first-order rate constant for denaturation, is equal to  $1.83 \times 10^{-5} \text{ sec}^{-1}$ .<sup>19</sup> The enzyme concentration in the leucinamide experiment was calculated to decrease by not more than 15%, and an excellent first-order plot (Figure 3) could be drawn for three half-lives. Using the scheme of eq 1, the velocity equation (eq 2) reduces to

$$v = k_{\text{cat}}[E][S]/K_m$$

(22) F. J. Kézdy, J. Jaz, and A. Bruylants, *Bull. Soc. Chim. Belges*, **67**, 687 (1958).

(23) F. J. Kézdy and M. L. Bender, *Biochemistry*, **1**, 1097 (1962).

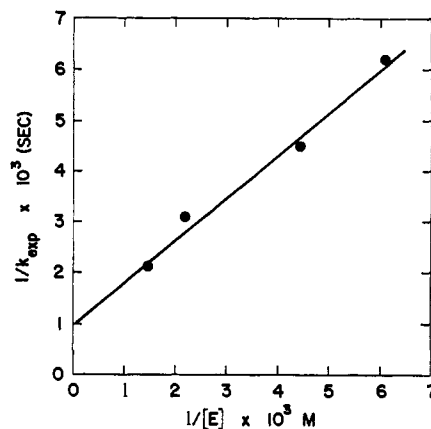


Figure 2. The reaction of  $\alpha$ -chymotrypsin with N-3-(2-furyl)acryloyl-L-heptanamide,  $[S] = 8.75 \times 10^{-5} M$ ,  $[E] = 1.1\text{--}6.7 \times 10^{-4} M$ , pH  $8.05 \pm 0.05$ ,  $25^\circ$ , 3.2% v/v acetonitrile-water.

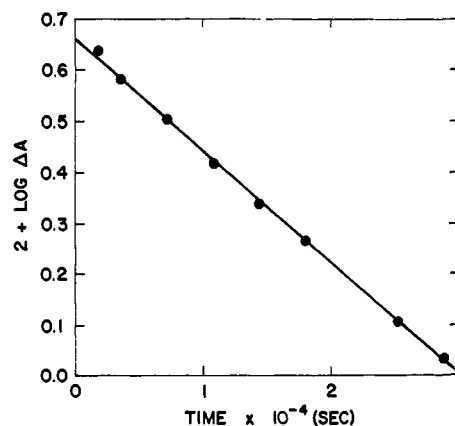


Figure 3. The first-order reaction of  $\alpha$ -chymotrypsin ( $3.38 \times 10^{-4} M$ ) with N-3-(2-furyl)acryloyl-L-leucinamide ( $6.26 \times 10^{-5} M$ ) at pH  $8.05 \pm 0.05$ ,  $25^\circ$ , 3.2% v/v acetonitrile-water.

The observed first-order rate constant is equal to  $k_{\text{cat}}[E]/K_m$ . The  $k_{\text{cat}}/K_m$  value was calculated to be  $0.19 \pm 0.02 M^{-1} \text{ sec}^{-1}$  by using the average enzyme concentration over the period of observation.

The kinetic constants  $k_{\text{cat}}$ ,  $K_m$ , and  $k_{\text{cat}}/K_m$  calculated from the plots shown in Figures 1-3 are presented in Table I. In this table, the value of  $K_m$  for the phenylalanine compound is about ten times larger than the value for the tryptophan compound. This trend is also found in four derivatives<sup>24</sup> of N-acetyl-L-phenylalanine compared to the same derivatives of N-acetyl-L-tryptophan (amide, ethyl ester, methyl ester, *p*-nitrophenyl ester). The values of  $k_{\text{cat}}$  of N-acetyl-L-tryptophanamide ( $4.37 \pm 0.90 \times 10^{-2} \text{ sec}^{-1}$ ) and N-acetyl-L-phenylalaninamide ( $4.6 \times 10^{-2} \text{ sec}^{-1}$ ) are quite close to the values found for the corresponding N-furylacryloyl analogs.<sup>24</sup> This means that the phenylalanine derivatives bind better with the enzyme than the tryptophan derivatives. The  $\alpha$ -aminoheptanoic acid residue has been used previously only once, as the N-acetyl methyl ester.<sup>25</sup> There, as in this work, its specificity lay between the phenylalanine and leucine derivatives in the series. We have not attempted to

(24) B. Zerner, R. P. M. Bond, and M. L. Bender, *J. Am. Chem. Soc.*, **86**, 3674 (1964).

(25) J. B. Jones, T. Kunitake, C. Niemann, and G. E. Hein, *ibid.*, **87**, 1777 (1965).

Table II. Relative  $k_{\text{cat}}/K_m$  Values for the Chymotrypsin-Catalyzed Hydrolysis of N-Acetylamino Acid Methyl Esters

Amino acid <sup>a</sup>	$k_{\text{cat}}, \text{sec}^{-1}$	$K_m \times 10^6 M$	$k_{\text{cat}}/K_m \times 10^{-4} M^{-1} \text{sec}^{-1}$	$\frac{k_{\text{cat}}/K_m}{k_{\text{catPhe}}/K_{m\text{Phe}}}$	Ref
			Set 1		
Try <sup>b</sup>	27.7	9.5	29.2	7.6	24
Phe <sup>b</sup>	57.5	150	3.8	1	24
			Set 2		
Phe <sup>c</sup>	48.2	180	2.7	1	e, f
Leu <sup>c</sup>	3.6	290	0.12	0.05	e
			Set 3		
Try <sup>c</sup>	49	11.7	42	10	8a, g
Phe <sup>c</sup>	52.5	125	4.2	1	8a, 25
Hep <sup>c</sup>	13.4	164	0.81	0.20	8a, 25
Leu <sup>c</sup>	4.6	290	0.16	0.04	8a, h
			Set 4		
Try <sup>b,d</sup>	30.5	0.2	1500	4.7	24
Phe <sup>b,d</sup>	77	2.4	320	1	24

<sup>a</sup> Try = tryptophan, Phe = phenylalanine, Hep =  $\alpha$ -aminoheptanoic acid, Leu = leucine. <sup>b</sup> pH 7.0, 25°, 3.17% v/v acetonitrile-water. <sup>c</sup> pH 7.9, 25°, aqueous solution 0.10 M sodium chloride. <sup>d</sup> *p*-Nitrophenyl ester. <sup>e</sup> G. Hein and C. Niemann, *Proc. Natl. Acad. Sci. U. S.*, **47**, 1341 (1961). <sup>f</sup> M. L. Bender and W. L. Glasson, *J. Am. Chem. Soc.*, **82**, 3336 (1960). <sup>g</sup> J. R. Knowles, *Biochem. J.*, **95**, 180 (1965). <sup>h</sup> G. E. Hein, J. B. Jones, and C. Niemann, *Biochem. Biophys. Acta*, **65**, 353 (1962).

measure nonproductive binding. However, we have shown (see Discussion) that this phenomenon does not affect the calculations on which we base our hypothesis.

From the experimental point of view, enzyme specificity can be analyzed as (1) "relative binding specificity," the ratio of the binding constant,  $K_m$ , of a substrate to the binding constant of a reference substrate, and as (2) "relative kinetic specificity," the ratio of the turnover constant,  $k_{\text{cat}}$ , of a given substrate to that of a reference substrate under identical conditions. Then the variation of the specificity constant, defined as  $k_{\text{cat}}/K_m$ ,<sup>7</sup> reflects the way a structural change in the hydrocarbon side chain attached to the asymmetric carbon atom of the particular L-amino acid amide affects the binding and/or reactivity. The other three groups, N-3-(2-furyl)acryloylamino, carboxamide, and hydrogen atom, are constant throughout the series. The ratio between specificity constants was calculated from the  $\alpha$ -chymotrypsin-catalyzed hydrolysis of ester substrates (see Table II). A comparison of specificity constant ratios from ester substrate data is presented in Table II while that from amide data is presented in Table I. The correspondence of the values obtained from N-acetylamino acid methyl esters and N-3-(2-furyl)acryloylamino acid amides is indeed good. Reproducibility of specificity constant ratios within a factor of two from different laboratories is considered acceptable because of inherent difficulties in handling very low enzyme concentrations and extreme sensitivity of enzymatic reactions toward minute changes of reaction medium such as pH, temperature, and ionic strength.

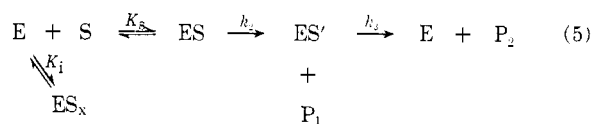
## Discussion<sup>26</sup>

It is possible, as has been suggested<sup>27</sup> earlier, that a substrate may bind to the enzyme in such a way that

(26) The definition and some implications of the specificity constant are discussed in ref 7.

(27) H. T. Huang and C. Niemann, *J. Am. Chem. Soc.*, **74**, 4634, 5963 (1952); G. E. Hein and C. Niemann, *ibid.*, **84**, 4487 (1962); T. H. Applewhite, R. B. Martin, and C. Niemann, *ibid.*, **80**, 1457 (1958); J. A. Thoma and D. E. Koshland, *ibid.*, **82**, 3329 (1960); E. A. Zeller, G. Ramachander, G. A. Fleisher, T. Ishimaru, and V. Zeller, *Biochem. J.*, **95**, 262 (1965); E. A. Zeller, *Biochem. Z.*, **339**, 13 (1963); J. A. Thoma, *Biochemistry*, **5**, 1365 (1965); K. R. Hanson, *ibid.*, **1**, 723 (1962); T. E. Barman and H. Gutfreund, Proceedings of the International Colloquium on Rapid Mixing Sampling Techniques, Academic Press, New York, N. Y., 1964, pp 339-343.

subsequent catalytic steps cannot occur. This process is called nonproductive binding. The only way for a substrate thus bound to react with the enzyme is to dissociate and then to reassociate with the enzyme in the productive mode. From such a scheme (eq 5)



where  $\text{ES}_x$  is the nonproductive enzyme-substrate complex, one may derive an expression for the reaction velocity (see eq 3),  $k_{\text{cat}}$  and  $K_m$ .<sup>7</sup> Even in this more

$$k_{\text{cat}} = k_2/(1 + k_2/k_3 + K_s/K_i) \quad (6)$$

$$K_m = K_s/(1 + k_2/k_3 + K_s/K_i) \quad (7)$$

complex system,  $k_{\text{cat}}/K_m$  is still equal to  $k_2/k_3$ , a ratio of constants on the productive pathway of catalysis. Thus the specificity constant applies to amides ( $k_2$  rate limiting), aryl and certain alkyl esters ( $k_3$  rate limiting), and other carboxylic derivatives.

We have already defined relative binding specificity and relative kinetic specificity (see Results) between two substrates of the enzyme  $\alpha$ -chymotrypsin. For every substrate which is hydrolyzed by  $\alpha$ -chymotrypsin in a measurable way, the constant,  $k_{\text{cat}}/K_m$  can be calculated. This constant may then be compared with the constant calculated from the enzymic hydrolysis (under identical conditions) of another (reference) substrate. One can then tabulate and assess the specificity of one substrate (or any substrate) relative to a reference substrate, based on the physical process of binding and the chemical processes of acylation and deacylation. This is done in Tables I and II.

Enzyme specificity has been analyzed<sup>7</sup> by determining the individual effects on the  $\alpha$ -chymotrypsin constant  $k_{\text{cat}}/K_m$  of the groups  $R_1$ ,  $R_2$ , and X (see Figure 4) attached to the asymmetric carbon atom of an amino acid derivative. The influence of the X group on  $k_{\text{cat}}/K_m$  has been shown not to involve binding of X to the enzyme but rather to involve the electronic nature of X,<sup>28</sup> whereas the influence of the  $R_1$  group on  $k_{\text{cat}}/K_m$

(28) See ref 7, Table III.

